



# Filleting PLATFORM

[C-2011]

## FLEXIBILITY AND PERFORMANCE

The Curio C-2011 Platform is a Unique Filleting System based around a single design concept. There are 4 standard frame models and 2 extended frame models sharing 95% of the same components allowing an unparalleled level of flexibility when it comes to utilisation and flexibility processing different sizes and species of fish.

With a size range spanning 400g to 12kg on the standard frame and from 3kg to 18kg on the extended frame the C-2011 Platform is the worlds most dynamic filleting system available for whitefish processing.

Curio conversion kits allow you to expand the size range capabilities of your machine ensuring your investment will continue to be productive in the future.

Our innovative approach to operator and engineering training ensures our machines are easy to adjust and maintain. Backed up by spare parts and service centres in Iceland, USA and UK we ensure speedy spare parts deliveries and technical assistance is always accessible when required.

THE C-2011 WHITEFISH FILLETING PLATFORM OFFERS A HIGH AND CONSISTENT YIELD, ACHIEVED BY A ROBUST AND RELIABLE DESIGN SPECIFIC FOR WHITEFISH PROCESSING.





## X SMALL MACHINE

### MACHINE RANGE XSMALL

Machine specifically designed for filleting of small sized fish, such as:

Cod, Haddock, Saithe, Pollack and Hake;  
450g to 1,2kg, head on, gutted fish



### GENERAL SPECIFICATIONS

#### TYPE: C-2011 XS

Productivity: up to 38 fish /min  
Belt speed: 30m / min  
Blade speed: 1100 rpm

#### DIMENSIONS

Length: 4.060 m  
Width: 1.880 m  
Height: 2.25 - 2.35 m

#### ELECTRICAL ASSEMBLY

Input voltage: 3 phases 380-440V AC.  
Power: 3,75 kW  
Current: 8.0 A

#### MACHINE, XS

Water: 14-32 / min.  
Pneumatics: 2l/h

## SMALL, MEDIUM & LARGE MACHINE

### MACHINE RANGE SMALL

1. Haddock (700g - 2,8kg)
2. Atlantic Cod (700g - 3kg)
3. Pacific Cod (700g - 2,5kg)
4. Pollack (700g - 2,8kg)
5. Tusk (700g - 2,8kg)
6. Ling (700g - 2,8kg)
7. Sea Wolf (1kg - 2,5kg)

### MACHINE RANGE LARGE

1. Haddock (2,8kg - 5kg)
2. Atlantic Cod (2,8kg - 12kg)
3. Pacific Cod (2,8kg - 8kg)
4. Pollack (2,8kg - 8kg)
5. Tusk (2,8kg - 8kg)
6. Ling (2,8kg - 8kg)
7. Sea Wolf (2,8kg - 8kg)



### MACHINE RANGE MEDIUM

1. Haddock (2kg - 4kg)
2. Atlantic Cod (2kg - 5kg)
3. Pacific Cod (2kg - 4kg)
4. Pollack (2kg - 4kg)
5. Tusk (2kg - 4kg)
6. Ling (2kg - 4kg)
7. Sea Wolf (2kg - 4kg)

### GENERAL SPECIFICATIONS

#### TYPE: C-2011 S, M, L

Productivity: 16 - 38 fish / min  
Belt speed: 30m / min  
Blade speed: 1100 rpm

#### DIMENSIONS

Length: 4.060m  
Width: 1.880m  
Height: 2.25 - 2.35m

#### ELECTRICAL ASSEMBLY

Input voltage: 3 phases 380-440V AC.

#### Machine, s, m, l

Power: 3.75kW  
Current: 8.0A  
Water: 14-32 / min.  
Pneumatics: 2l/h



## XL & XXL MACHINE

### MACHINE RANGE XL

1. Haddock (2,8kg - 5kg)
2. Atlantic Cod (3kg - 9kg)
3. Pacific Cod (2,8kg - 8kg)
4. Pollack (2,8kg - 8kg)
5. Tusk (2,8kg - 7kg)
6. Ling (2,8kg - 7kg)
7. Sea Wolf (3kg - 7kg)

### MACHINE RANGE XXL

1. Haddock (2,8kg - 5kg)
2. Atlantic Cod (9kg - 18kg)
3. Pacific Cod (5kg - 12kg)
4. Pollack (5kg - 15kg)
5. Tusk (6kg - 12kg)
6. Ling (6kg - 12kg)
7. Sea Wolf (6kg - 12kg)

### GENERAL SPECIFICATIONS

#### TYPE: C-2011 XL & XXL

Productivity: 16 - 28 fish / min  
Belt speed: 30m / min  
Blade speed: 1100 rpm

#### DIMENSIONS

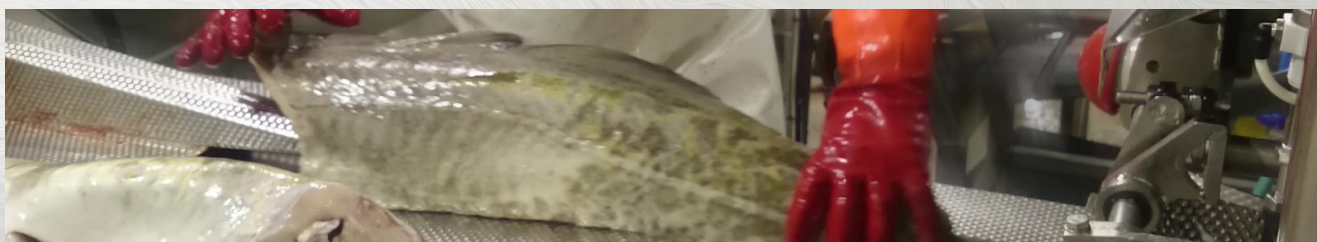
Length: 4.510 m  
Width: 1.880 m  
Height: 2.25 - 2.35 m

#### ELECTRICAL ASSEMBLY

Input voltage: 3 phases 380-440V AC.  
Power: 4.5 kW  
Current: 10.5 A

#### MACHINE, XL & XXL

Water: 14-32 / min.  
Pneumatics: 2l/h



## CURIO C-2011

Simple user interface allows the operator to easily switch between different species, select different range settings, adjust the machine speed and operate the machine safely.

Opening the safeguards provides a clear and easy access to the machine internals, minimizing the time required for daily maintenance, cleaning and repair work.

Automatic lubrication system ensures that all critical parts are well lubricated, reducing repair and maintenance work while providing a reliable and safe operation.

Stainless steel trays, adjustable guides and flexible cutting mechanism ensure high and consistent yield and throughput.

All materials used, in direct contact with the processed fish have been carefully selected to be approved for food processing.

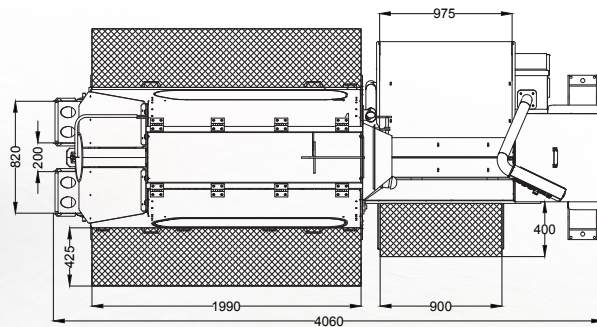
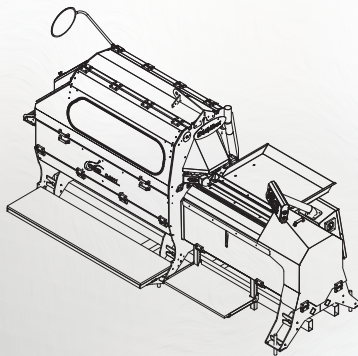
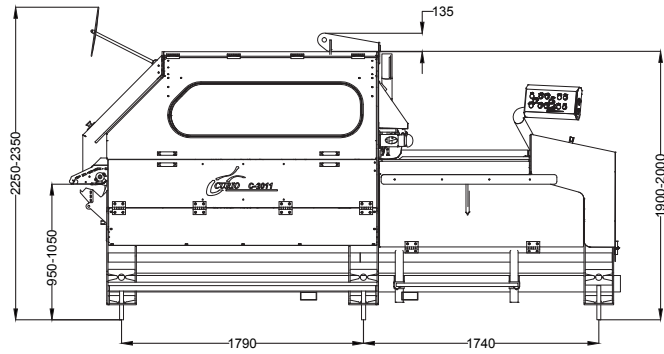
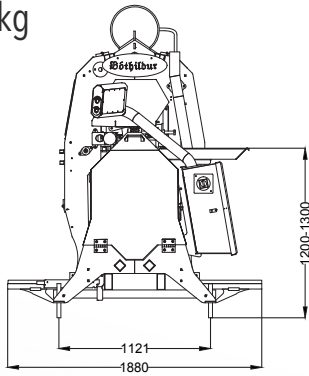




## DIMENSIONS FOR STANDARD FRAME

Dimensions in mm.

Weight: 1892kg



## DIMENSIONS FOR XL & XXL FRAME

Dimensions in mm.

